



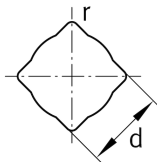
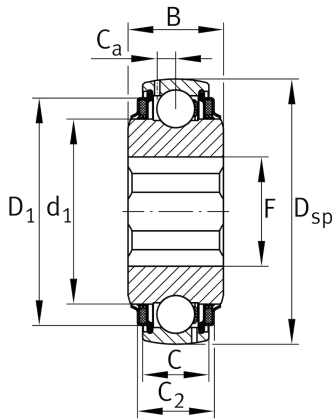
GVK109-211-KTT-B

Plummer block housing unit

Schaeffler ID:
0728435860000

Self-aligning deep groove ball bearings
GVK...KTT-B, spherical outer ring, inner
ring with square bore, T seals on both
sides

Technical information



Main Dimensions & Performance Data

D_{SP}	100 mm	Outside diameter
B	36 mm	Width
C_r	43,500 N	Basic dynamic load rating, radial
C_{0r}	29,000 N	Basic static load rating, radial
$n_{G \text{ Grease}}$	8,000 1/min	Limiting speed for grease lubrication
	1.07 kg	Weight

Dimensions

D_1	85.8 mm	Outside diameter seal
C	25 mm	Width, outer ring
F	55.1 mm	Maximum distance hexagonal bore
r	2.5 mm	Radius hexagonal bore
C_2	28.9 mm	Sealing total width
d_1	69.8 mm	Rib diameter inner ring
d	39.688 mm	Width of flats
C_a	7 mm	Distance to lubrication hole
d	1.5625 inch	Width across flats (Inch)
	0.3	Width across flats upper tolerance
	0	Width across flats lower tolerance

Calculation factors

f_0	14.2	Calculation factor
-------	------	--------------------